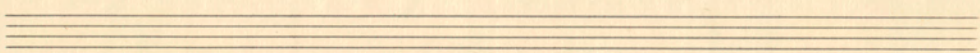
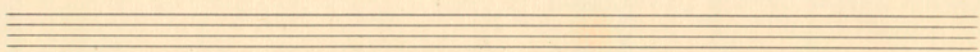
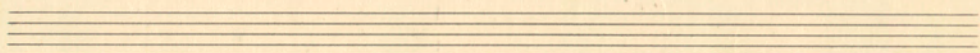
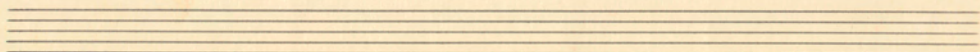
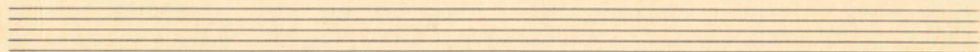
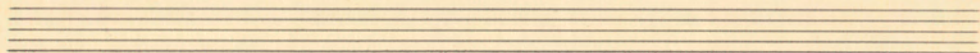
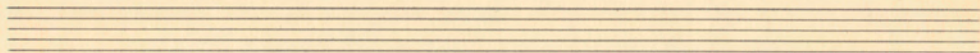
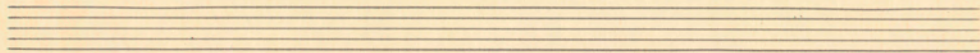


Bratsche.  
Quartett II.  
Gross-Gerau.

Handwritten text on the reverse side of the page, including the name "Gross-Gerau" and other illegible markings.



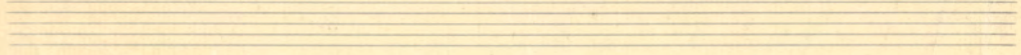
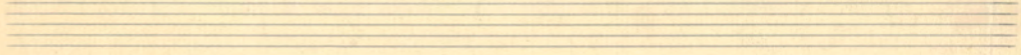
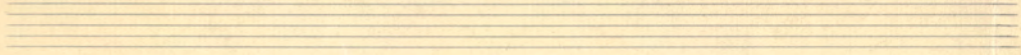
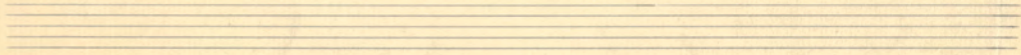
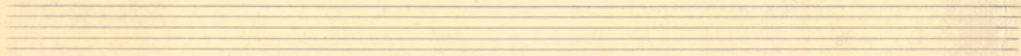
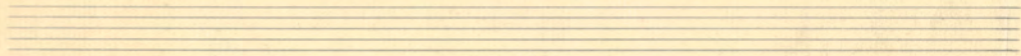
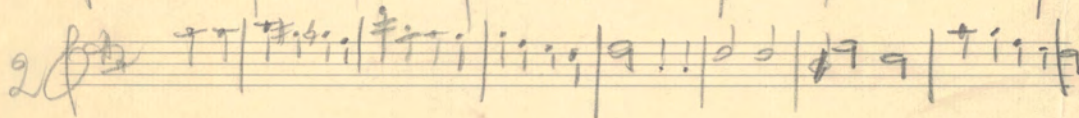
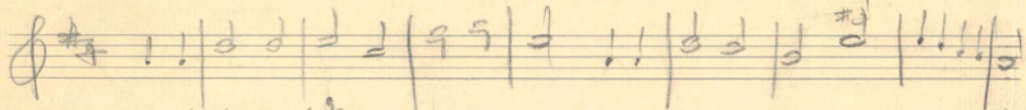


X  
ri

G<sup>2</sup>

A handwritten musical score consisting of five staves. The top staff is in treble clef and contains a melodic line with various accidentals and dynamics. The second staff is in bass clef and contains a bass line with notes and rests. The third and fourth staves are also in bass clef and contain more complex notation, including chords and accidentals. The fifth staff is in treble clef and contains a melodic line. The entire score is heavily annotated with handwritten notes, including 'G<sup>2</sup>', '4<sup>2</sup>', 'X', and various accidentals. A large diagonal line is drawn across the staves, and there are several other markings and symbols throughout the piece.

Four empty musical staves at the bottom of the page, with some faint handwritten markings and a diagonal line extending from the previous section.



The image shows a page of ten blank musical staves. Each staff is composed of five horizontal lines. The paper is aged and yellowed, with some faint, illegible markings and stains scattered across the surface. The staves are arranged vertically, with a small gap between each one. The overall appearance is that of a vintage manuscript page.