

von Schläger

H.

Lehrbericht

über die Leistungen in der *III. Kl.* Klasse der *Gamrius*-Schule

zu *Gros* - *Gerau*.

für das Schuljahr 1888/1889.

F. H. H.

Dritte verbesserte und vermehrte Auflage.

Eingerichtet und mit kurzen Andeutungen in Bezug auf Unterricht, Erziehung, Gesundheitspflege in der Schule
und dem Entwurf einer Schulordnung versehen

von

J. B. Krämer,

Kreis-Schulinspektor zu Bingen a. Rh.



Nachdruck verboten.

Schläger.

Weinheim.

Verlag von Fr. Adermann.

Tapp

I.

II. Trial.

This image shows a page of handwritten musical notation on 14 staves. The notation is written in black ink on aged, slightly yellowed paper. The music is organized into systems, with each system containing two staves. The notation includes various musical symbols such as notes, rests, beams, slurs, and dynamic markings like 'p' (piano) and 'f' (forte). There are also some specific markings like '1' and '3' above notes, possibly indicating first or third endings. The key signature appears to be one sharp (F#), and the time signature is not clearly visible but seems to be common time (C). The handwriting is fluid and characteristic of 18th or 19th-century manuscript notation. The page ends with a double bar line and a final chord on the bottom staff.

Handwritten musical notation at the top of the page, including a treble clef, a key signature of one sharp (F#), and a series of notes and rests.

Twelve sets of empty musical staves, each consisting of five horizontal lines, arranged vertically down the page.

Handwritten musical notation at the bottom right, consisting of a treble clef and a common time signature (C).

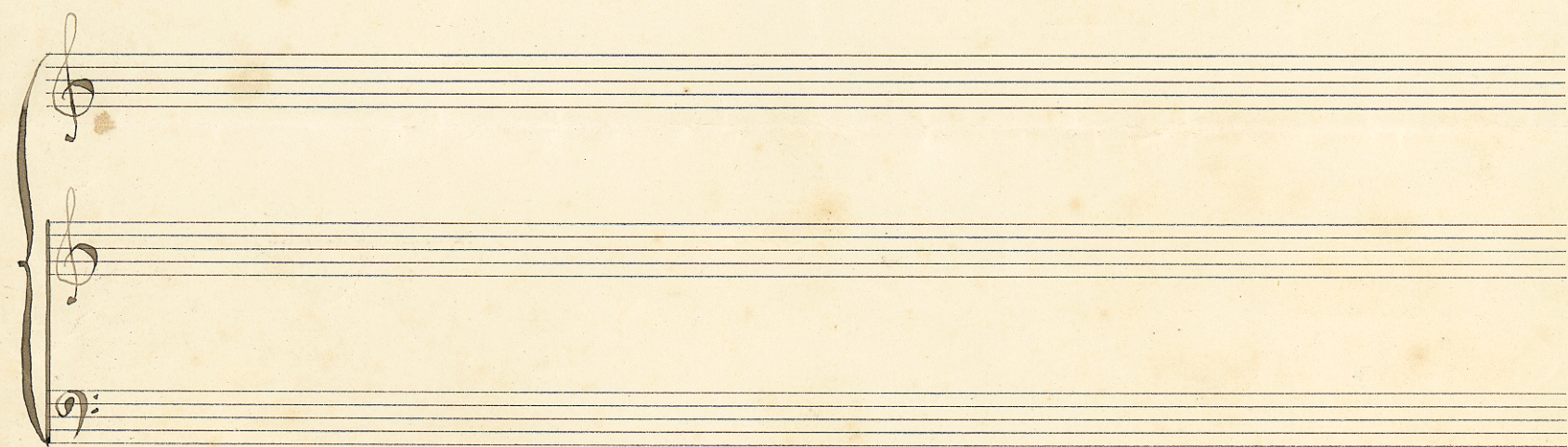
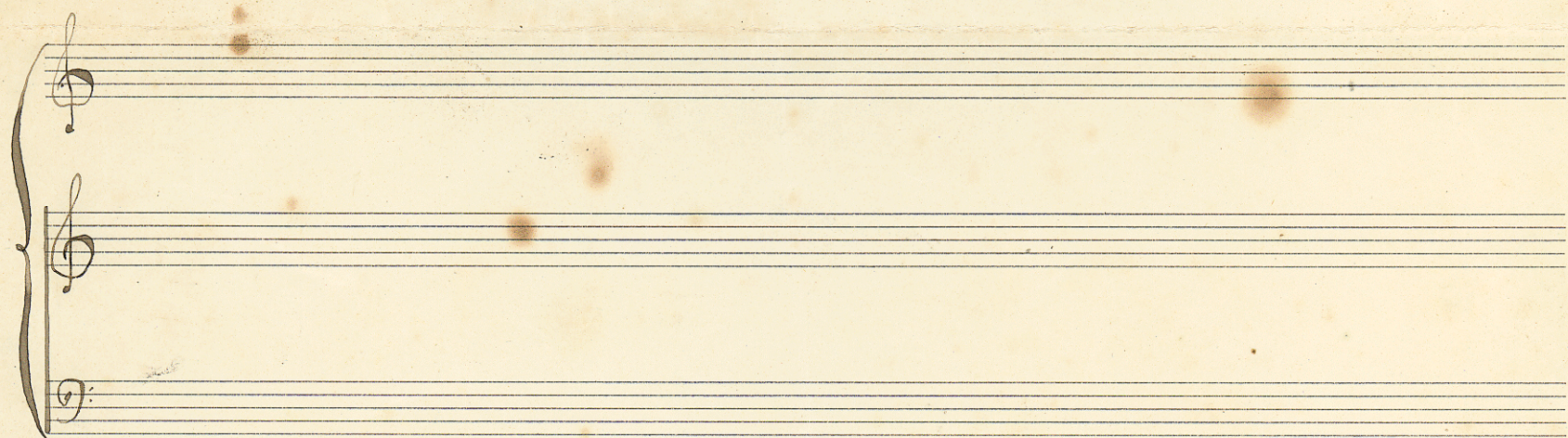
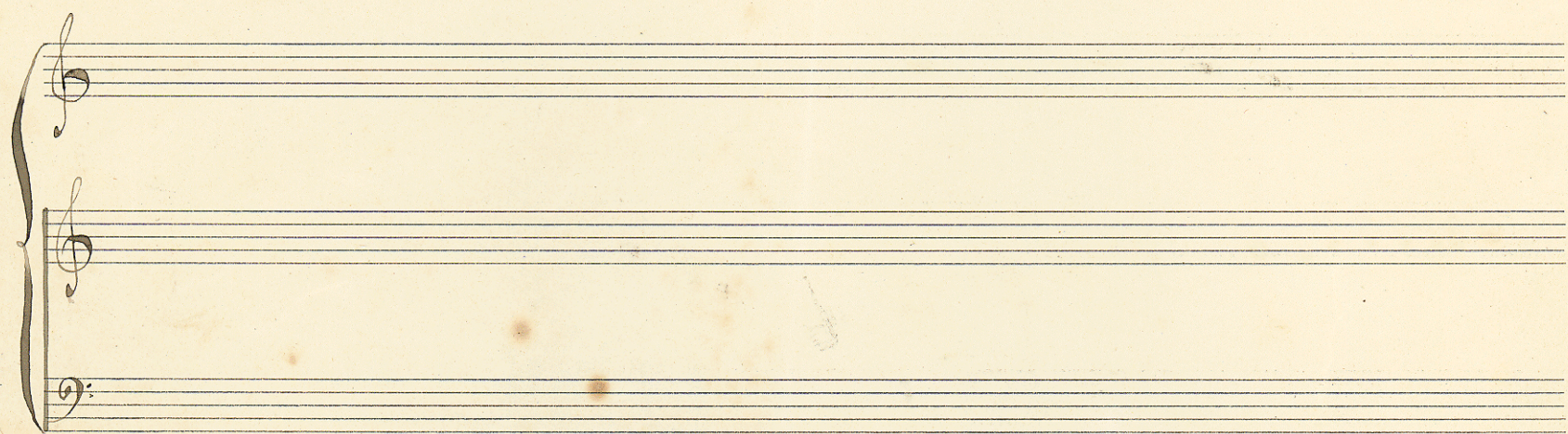
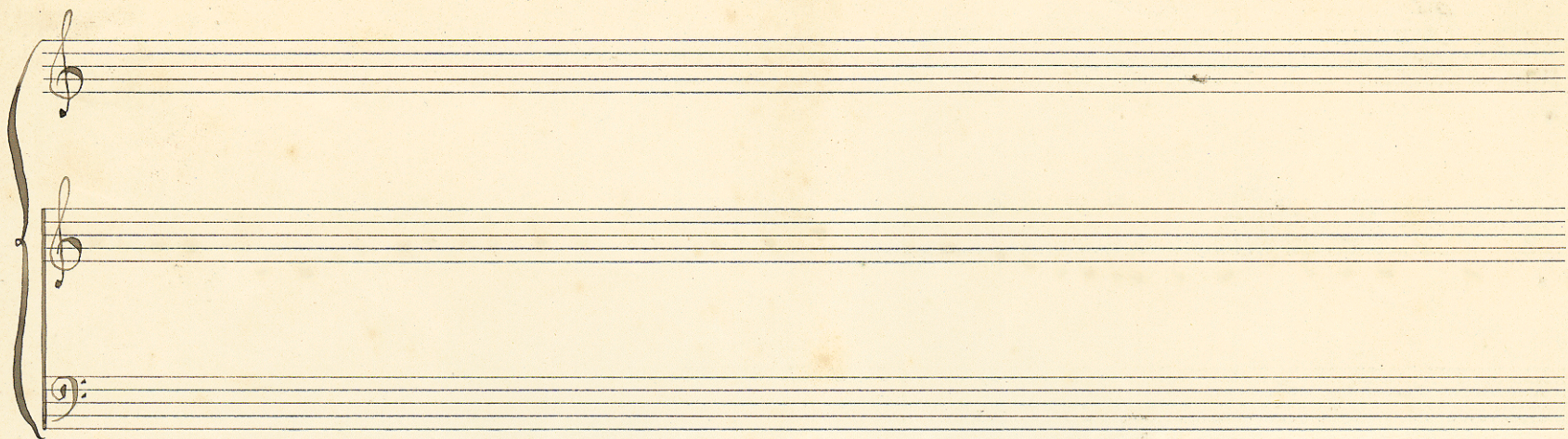
Handwritten musical notation at the bottom right, consisting of a treble clef.

Handwritten musical notation on a grand staff. The top staff has a treble clef and a key signature of one sharp (F#). The bottom staff has a bass clef. The music is written in a single system with a brace on the left. The melody in the treble clef consists of several measures of eighth and sixteenth notes, with some rests and a final fermata-like ending.

Handwritten musical notation on a grand staff. The top staff has a treble clef and a key signature of one sharp (F#). The bottom staff has a bass clef. The music is written in a single system with a brace on the left. The melody in the treble clef consists of a short sequence of eighth notes, followed by a rest.

A blank grand staff with a treble clef on the top staff and a bass clef on the bottom staff. The paper shows signs of aging and staining.

A blank grand staff with a treble clef on the top staff and a bass clef on the bottom staff. The paper shows signs of aging and staining.

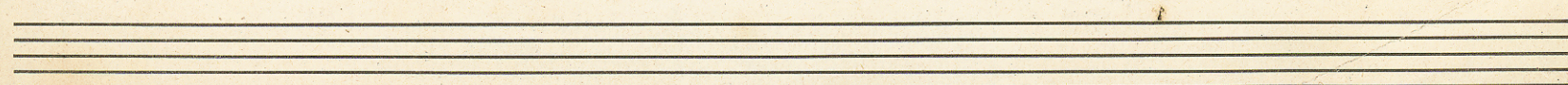
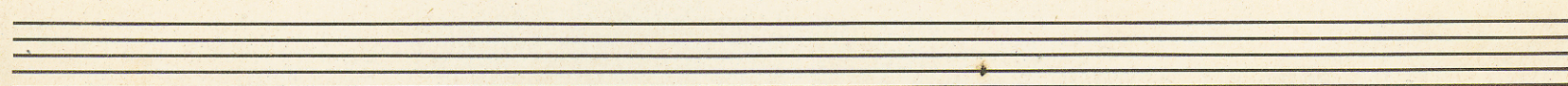
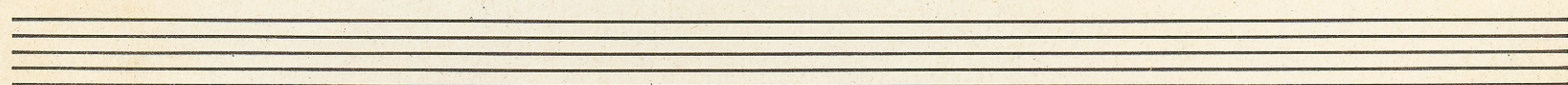
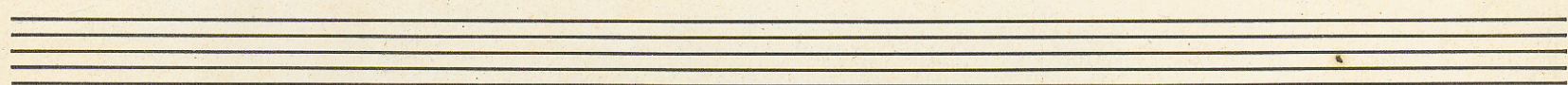
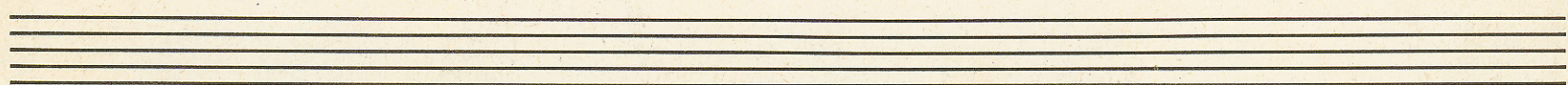
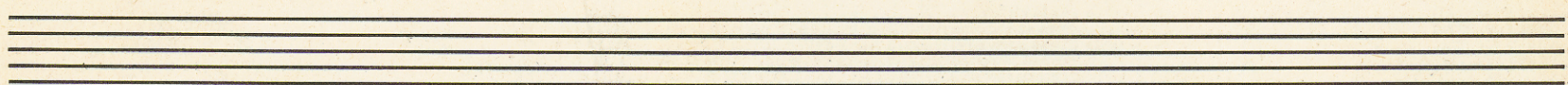
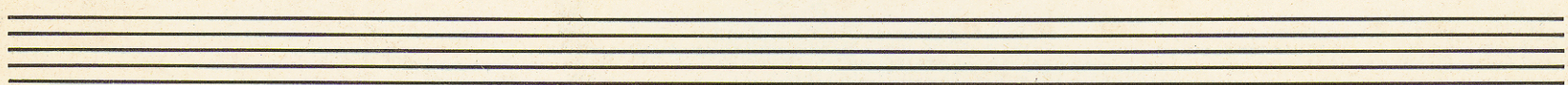
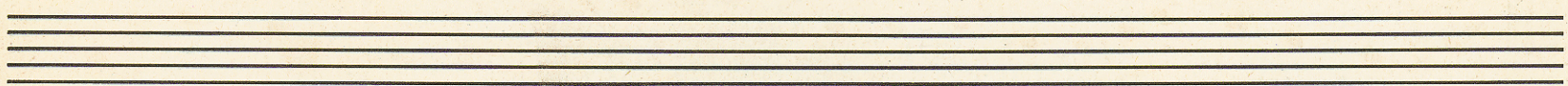
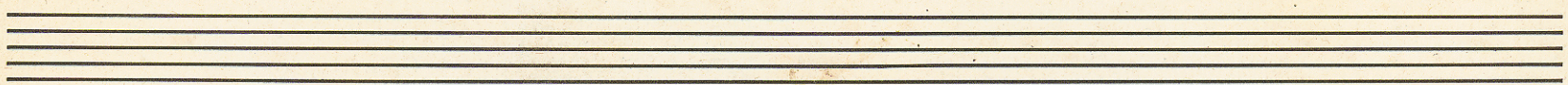
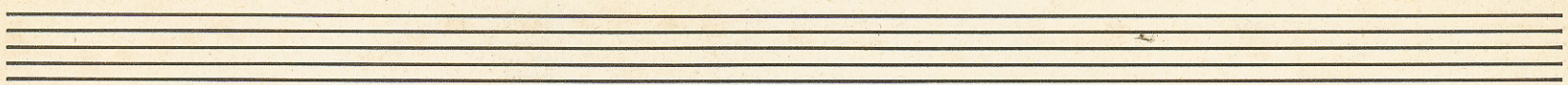


Andante cantabile. Preghiera. Flöte.

F. Schubert

12

pp cresc. mf decresc. e mor. pp



W. O. GILBERT & SONS, MANUFACTURERS OF MUSIC PAPER, 15 N. 4TH ST., PHILADELPHIA, PA.

Allegretto!

9

4

2

11

14

17

3

10

13

16

18

simile

p

f

triple

18

Müller - Grab

