

~~Forcello~~

Gloria

3-Lux?

a

Kiefer

lung

credo.

in unum

genit

omnipotens

67

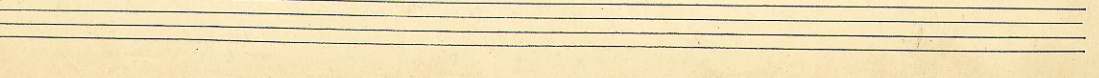
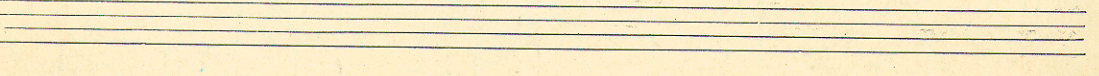
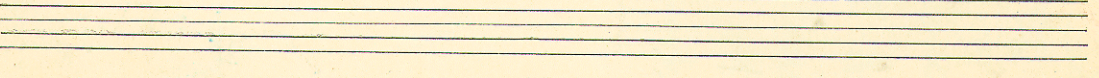
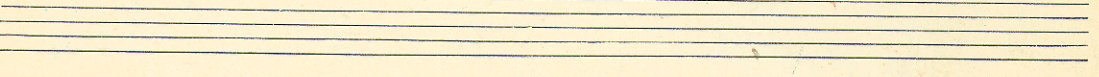
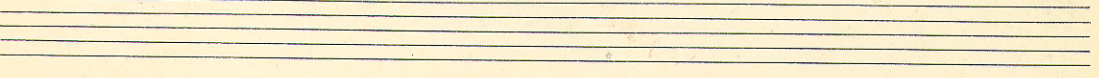
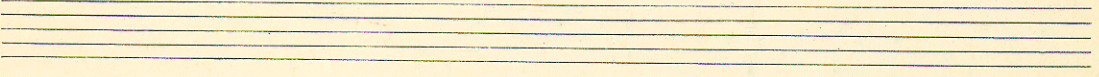
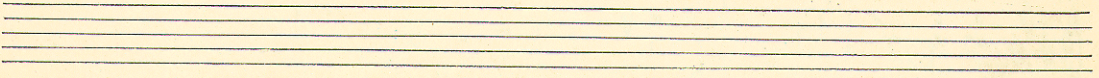
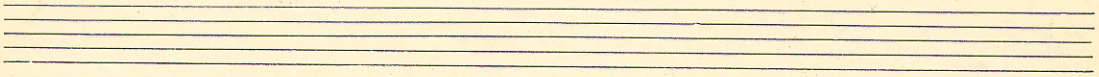
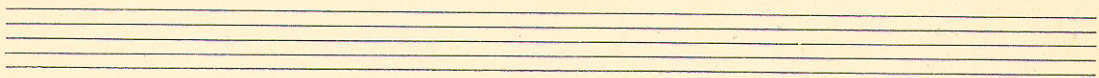
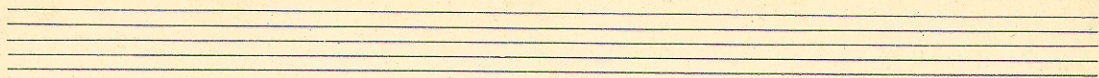
68



I.

A handwritten musical score consisting of three staves. The top staff is in treble clef with a key signature of one sharp (F#) and a common time signature (C). It contains a melodic line with several measures of music, including a blue bracket under the final measure. The middle staff is in bass clef with a key signature of one sharp (F#) and a common time signature (C). It contains a bass line with various notes and rests, including a blue bracket under the final measure. The bottom staff is in bass clef with a key signature of one sharp (F#) and a common time signature (C). It contains a bass line with various notes and rests, including a blue bracket under the final measure. The score is written in black ink on aged paper.

Four empty musical staves at the bottom of the page, arranged in two pairs. Each staff consists of five horizontal lines. There are some faint blue markings on the right side of the page, possibly indicating a page number or a section marker.



et in spiritu sanctum dominum et vivificantem

qui ex patre filii qui pro ce-

et in spiritu sanctum dominum et vivificantem

qui ex patre filii qui pro ce-

qui ex patre filii qui pro ce-

et in spiritu sanctum dominum et vivificantem

qui ex patre filii qui pro ce-

qui ex patre filii qui pro ce-

qui ex patre filii qui pro ce-

qui ex patre filii qui pro ce-

W. O. N. I. H. № 402 a. 10 L. Hoch-Octav.