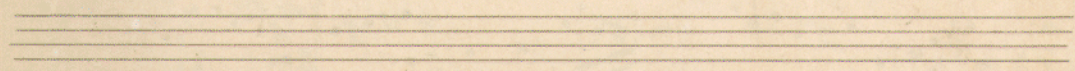
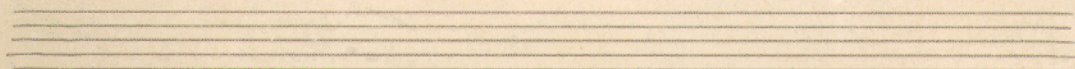
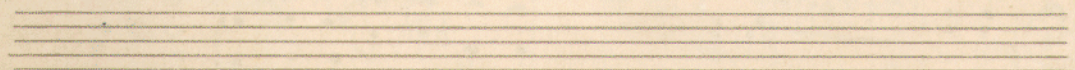
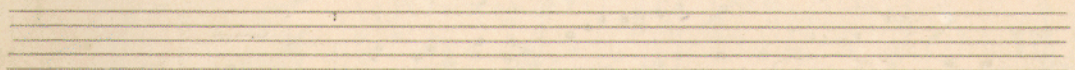
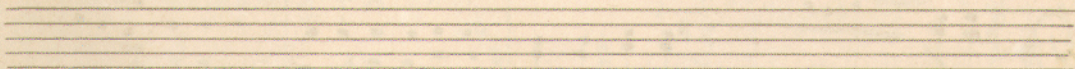
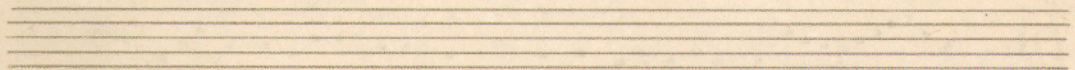
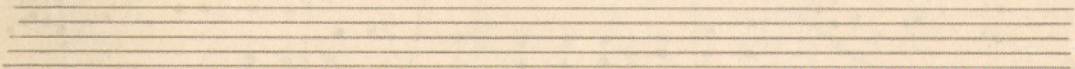
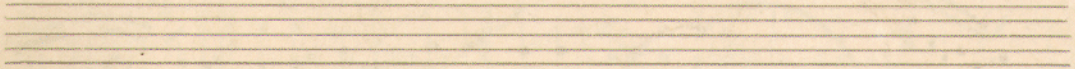
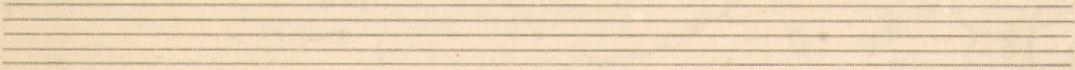
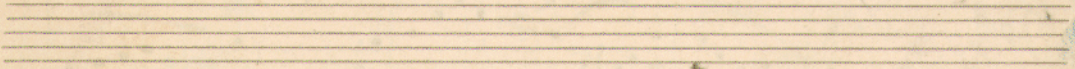


Preludium d-moll Klavier.

A



10. 11. 20.

Präludium d-moll

Leinhard Appel.

Handwritten musical notation for the first system, consisting of a treble clef staff and a bass clef staff. The key signature is one flat (B-flat) and the time signature is 9/8. The music begins with a melodic line in the treble staff and a supporting bass line in the bass staff. A dynamic marking *mf* is present.

Handwritten musical notation for the second system. It continues the melodic and bass lines from the first system. A dynamic marking *dim.* is written above the treble staff, and *cres.* is written below the bass staff.

Handwritten musical notation for the third system. The treble staff shows a melodic line with some slurs, and the bass staff provides harmonic support. A dynamic marking *cres.* is written below the bass staff.

Handwritten musical notation for the fourth system. The music continues with a dynamic marking *dim.* written above the treble staff.

Handwritten musical notation for the fifth and final system. It concludes the piece with a dynamic marking *mf* at the beginning, *dim.* in the middle, and *cres.* towards the end.

Handwritten musical score system 1. It consists of two staves, treble and bass clef. The key signature has two flats (B-flat and E-flat). The time signature is 4/4. The music features complex rhythmic patterns with many beamed notes and slurs. Dynamic markings include *f*, *dim.*, *mf*, and *dim. f*. There are also some markings that look like *7b* and *b* with a sharp sign.

Handwritten musical score system 2. It consists of two staves, treble and bass clef. The key signature has two flats. The music continues with complex rhythmic patterns. Dynamic markings include *mf* and *resc.* (ritardando). There are some markings like *2* and *8p*.

Handwritten musical score system 3. It consists of two staves, treble and bass clef. The key signature has two flats. The music features complex rhythmic patterns with many beamed notes and slurs. Dynamic markings include *f*, *mf*, and *resc.* (ritardando). There are also some markings like *+* and *mf*.

Handwritten musical score system 4. It consists of two staves, treble and bass clef. The key signature has two flats. The music continues with complex rhythmic patterns. There are some markings like *+* and *mf*.

Handwritten musical score system 5. It consists of two staves, treble and bass clef. The key signature has two flats. The music features complex rhythmic patterns with many beamed notes and slurs. Dynamic markings include *dim.* and *mf*.

3

~~Handwritten musical notation at the top of the page, including notes and accidentals.~~

Handwritten musical notation on a grand staff (treble and bass clefs). The music includes notes, rests, and dynamic markings: *res.*, *dim.*, and *res.*. There are several instances of double lines under notes, possibly indicating accents or slurs. A large 'X' is drawn over the right side of the first system.

Handwritten musical notation on a grand staff. This system is heavily crossed out with a large 'X'. It includes notes, rests, and dynamic markings like *res.*. On the right side, there are vertical markings: $\frac{10}{11}$, $\frac{20}{21}$, and $\frac{20}{20}$.

Handwritten musical notation on a grand staff, mostly obscured by a large 'X' and diagonal lines. Some notes and accidentals are visible through the markings.

Handwritten musical notation on a grand staff. It features notes, rests, and a circled 'cc' marking. A large 'X' is written at the beginning of the system. On the right side, there are vertical markings: $\frac{10}{11}$, $\frac{20}{21}$, and $\frac{20}{20}$.

Handwritten musical notation on a grand staff, consisting of several empty staves with some faint markings.