

1)

Handwritten musical notation for measures 1-3. The top staff is in treble clef and the bottom staff is in bass clef. Both are in D major and 12/8 time. Measure 1 has a red '1' below the bass staff. Measure 2 has a red '2' below the bass staff. Measure 3 has a red '3' below the bass staff. A 'w' (ritardando) marking is above the treble staff in measure 3.

Handwritten musical notation for measures 4-6. Measure 4 has a red '4' below the bass staff. Measure 5 has a red '5' below the bass staff. Measure 6 has a red '6' below the bass staff. A '90.' (ritardando) marking is above the treble staff in measure 4.

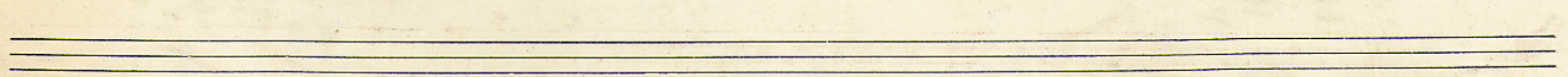
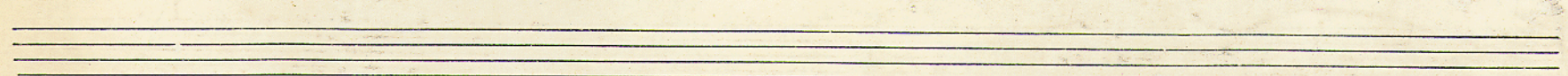
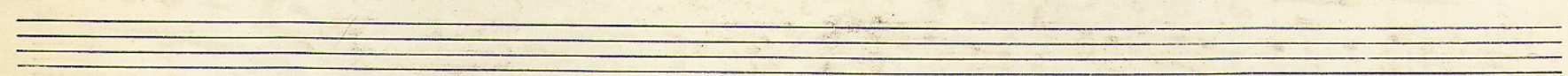
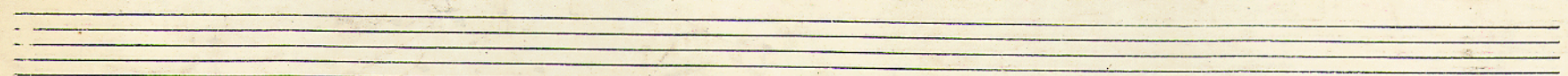
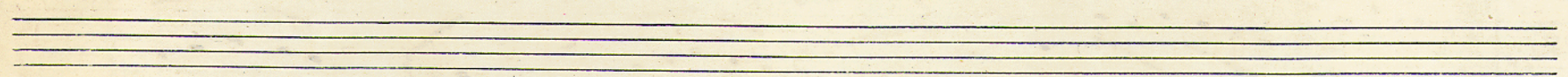
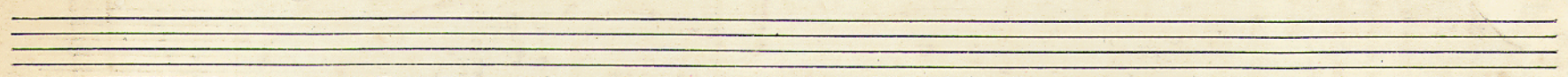
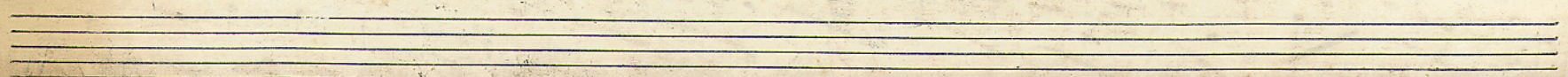
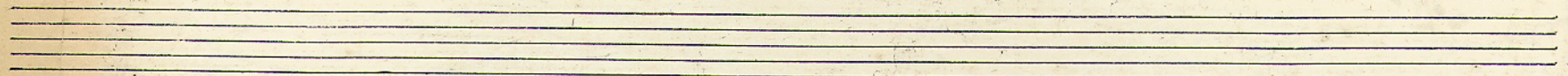
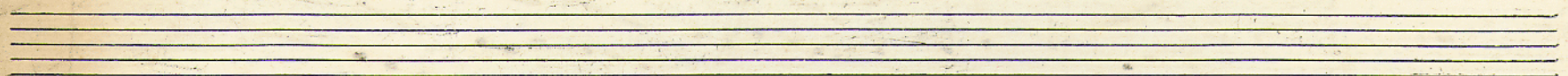
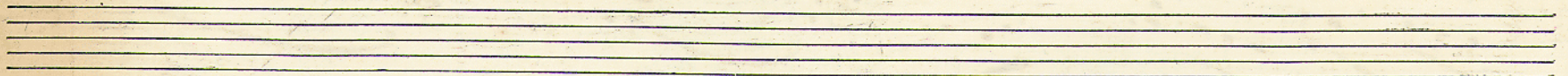
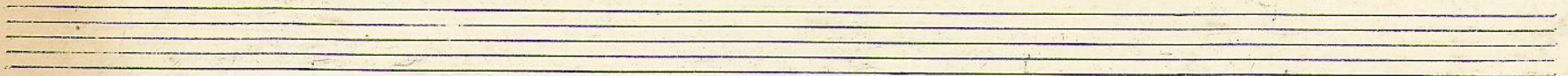
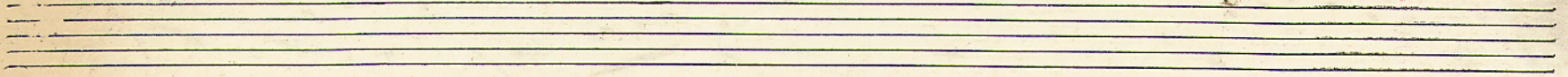
Handwritten musical notation for measures 7-9. Measure 7 has a red '7' below the bass staff. Measure 8 has a red '8' below the bass staff. Measure 9 has a red '9' below the bass staff. A 'w' (ritardando) marking is above the treble staff in measure 7. Fingerings are indicated by numbers 1-5 below notes in the bass staff.

Handwritten musical notation for measures 10-12. Measure 10 has a red '10' below the bass staff. Measure 11 has a red '11' below the bass staff. Measure 12 has a red '12' below the bass staff. Fingerings are indicated by numbers 1-5 below notes in the bass staff.

Handwritten musical notation for measures 13-15. Measure 13 has a red '13' below the bass staff. Measure 14 has a red '14' below the bass staff. Measure 15 has a red '15' below the bass staff. A circled '3' is written below the bass staff in measure 13. Fingerings are indicated by numbers 1-5 below notes in the bass staff.

Handwritten musical notation for measures 16-18. Measure 16 has a red '16' below the bass staff. Measure 17 has a red '17' below the bass staff. Measure 18 has a red '18' below the bass staff. A circled '3' is written below the bass staff in measure 18. Fingerings are indicated by numbers 1-5 below notes in the bass staff.

Scherzo zu Paul D. Fugen  
Hilze



Musical notation system 1, measures 19-21. Treble clef, key signature of two sharps (F# and C#). Measure 19 starts with a red 'M' and contains a melodic line with eighth notes. Measure 20 has a red '20' above it. Measure 21 has a red '21' below it and features a complex rhythmic pattern with many eighth notes.

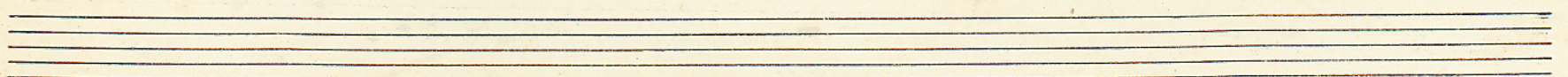
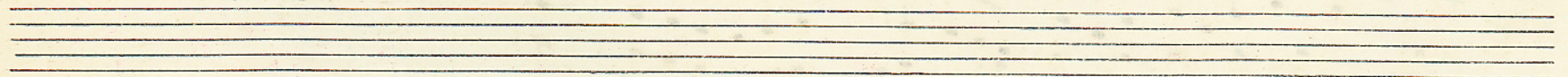
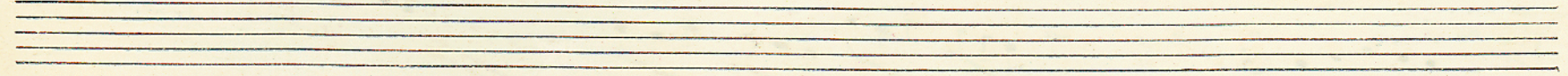
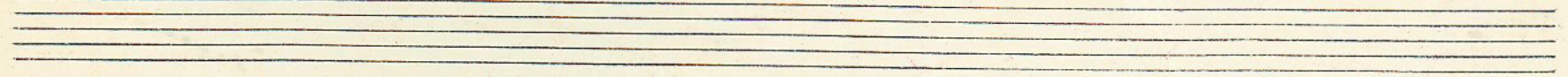
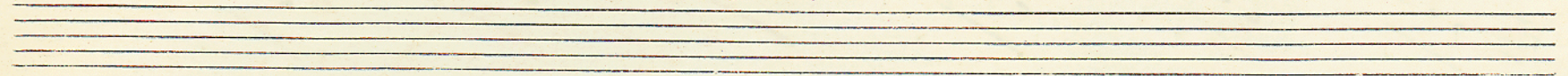
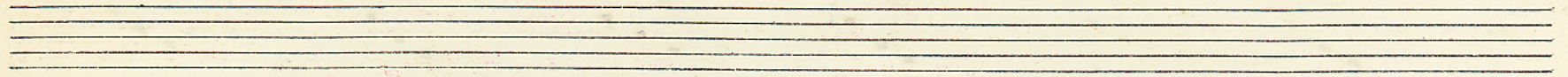
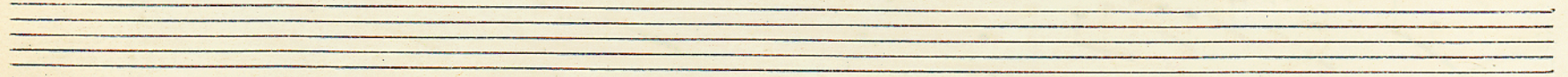
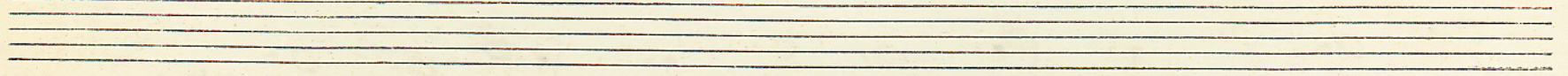
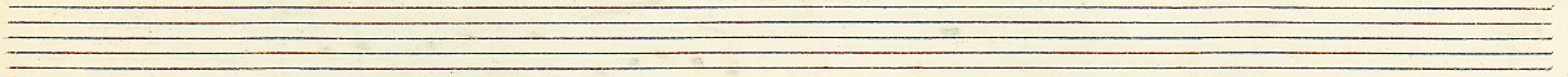
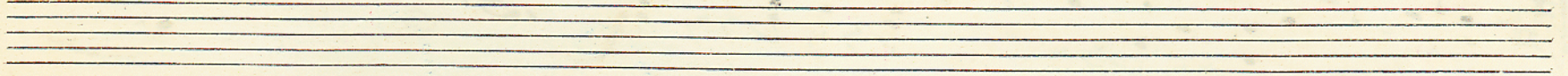
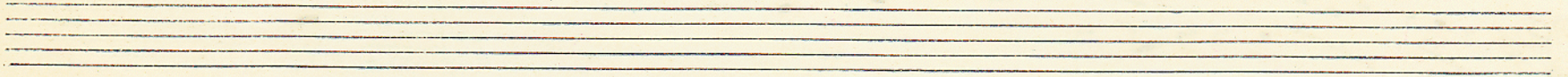
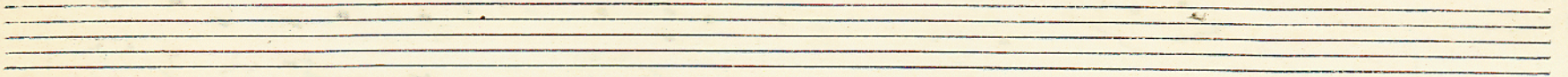
Musical notation system 2, measures 22-24. Treble clef, key signature of two sharps. Measure 22 has a red '22' below it. Measure 23 has a red '23' below it. Measure 24 has a red '24' above it and shows a melodic line with some rests.

Musical notation system 3, measures 25-27. Treble clef, key signature of two sharps. Measure 25 has a red '25' below it. Measure 26 has a red '26' below it. Measure 27 has a red '27' below it and features a melodic line with dotted rhythms.

Musical notation system 4, measures 28-30. Treble clef, key signature of two sharps. Measure 28 has a red '28' below it. Measure 29 has a red '29' below it. Measure 30 has a red '30' below it and shows a melodic line with some chromaticism.

Musical notation system 5, measures 31-33. Treble clef, key signature of two sharps. Measure 31 has a red '31' below it. Measure 32 has a red '32' below it and includes chordal figures with numbers 6, 4, 2, 3, 5, and (3#) written below. Measure 33 has a red '33' below it and features a complex melodic line with many notes.

Musical notation system 6, measures 34-36. Treble clef, key signature of two sharps. Measure 34 has a red '34' below it. Measure 35 has a red '35' below it. Measure 36 has a red '36' below it and shows a melodic line with a red slur over it. At the bottom right, there are handwritten numbers '45' and '2+6'.





2/1 standhafte Ruffel finden sich in: Sopran  
 in 13-14 u. andere zum, als ob bei  $\frac{7}{3}$  in B;  
 die Ruffel sind finden die Erfindung der Erfindung  
 auf.

Man kann es besser, die zwei Kp. beizubehalten.  
 also in 7.8<sub>x</sub> von der Ruffelbildung abgesehen u. fort-  
 zu setzen (Sopran auf Bass)

ist 7.11 ff. (im Sopran)

M. 7. 3/4      im beginnend  
 u. Messung      5  
 4      auf

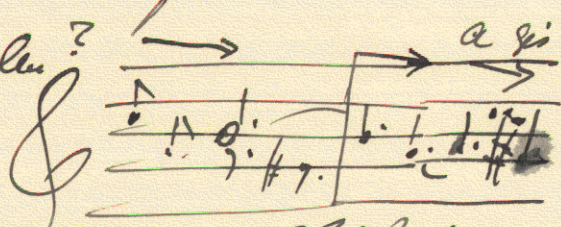
7. 18/19.

7 7  
 7 7!  
 (wie oft bei 1. Hand)

(7. 29: <sup>MB</sup> der heilige fi'-fi', g'-g', fi'-fi'  
 wirklich original ??)

7. 31 : Erster aufsteig, u. vollendet auf  $\frac{3}{4}$

auf Gesamt der von 7. 21 folgenden  
 Linie auf weiter fallen?



der Zug zu  $a^2$  fordert vielleicht die Abwärtsbewegung  
 u. wird  $a^2$  vorrangig.

7. 33 : als Verbal laten: Genau; auf aus genau  
ohne Unterbrechung, der Strecke von der Stufe  
selber alles Wörter auf ( $\therefore = \text{V} \frac{6}{7} - \text{I}$ )

1. Neu find er haben besonder an Wichtig.  
mit folgende fragen

7. 38 : aus aus:

7. 42 : Können der Text mit wird und Dies 3. Auf  
beginnen? Der Stapel e<sup>2</sup> in 7. 40 wird  
ja, bis 2<sup>2</sup> in 42 ist er er.





Handwritten musical notation on a grand staff (treble and bass clefs). The key signature is one sharp (F#). The music is divided into measures with red annotations. Measure numbers 37, 38, and 39 are written in red above the staff. Chord symbols and fingering numbers are present below the notes. Measure 38 includes a circled 'X' over a note. Measure 39 ends with a double bar line and repeat dots.

Handwritten musical notation on a grand staff. The key signature is one sharp (F#). The music is divided into measures with red annotations. Measure numbers 40, 41, and 42 are written in red above the staff. Chord symbols and fingering numbers are present below the notes. Measure 42 ends with a double bar line and repeat dots.

Two empty musical staves at the bottom of the page, consisting of five lines each.

