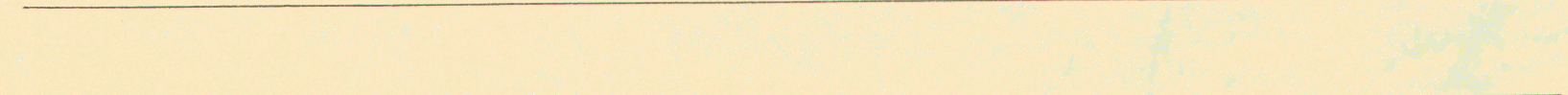
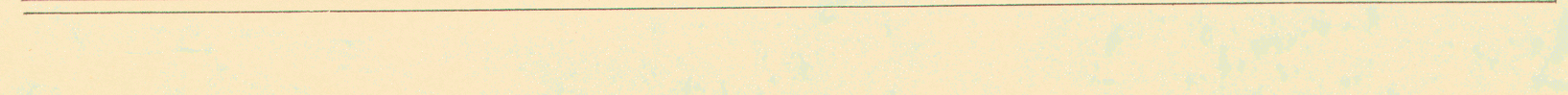
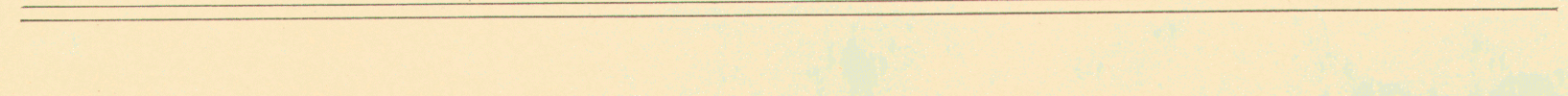
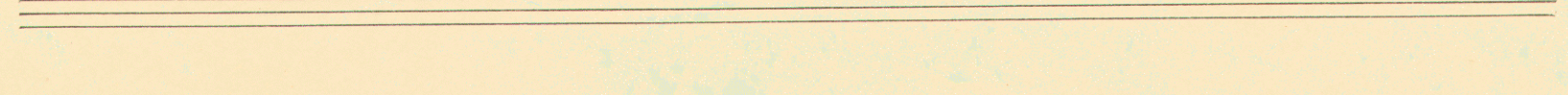
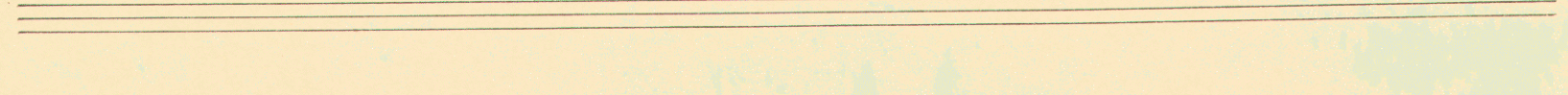
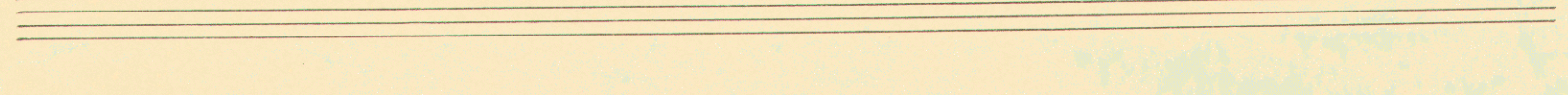
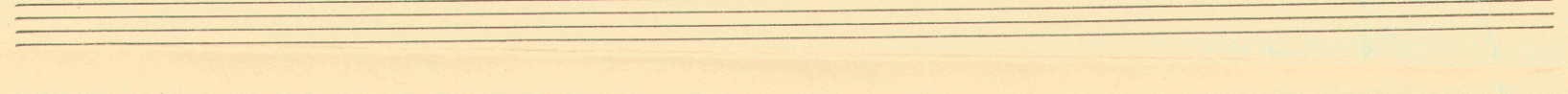
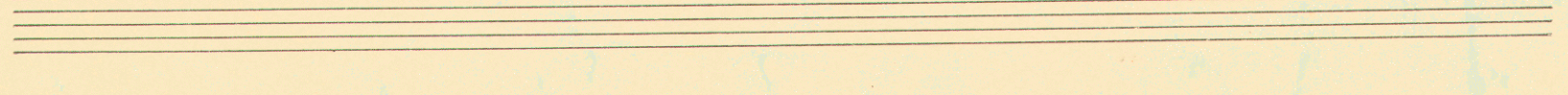
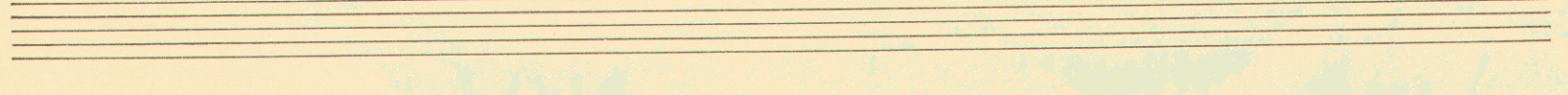
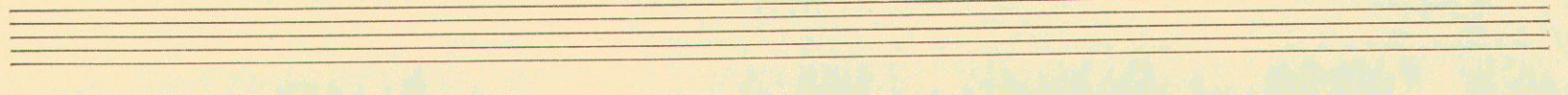
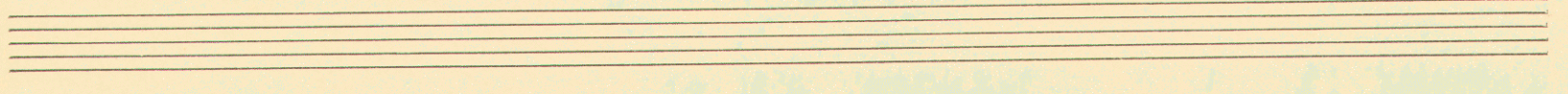
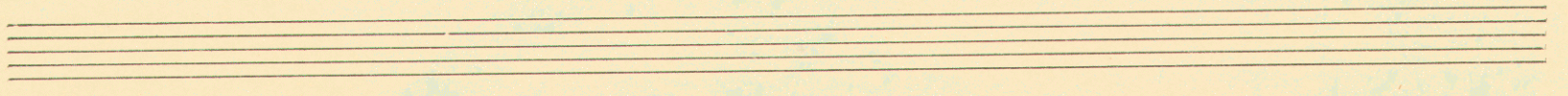
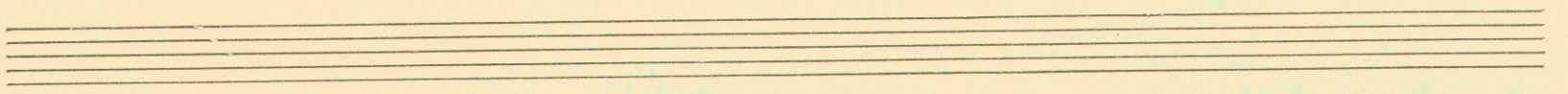
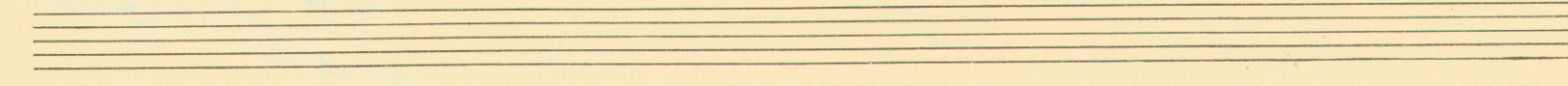
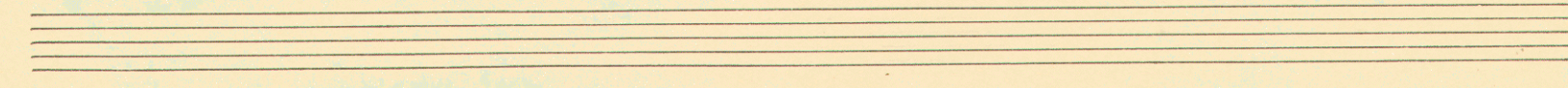
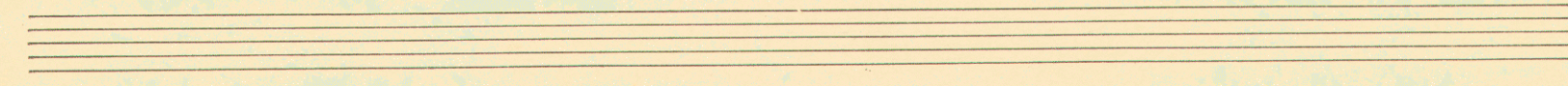
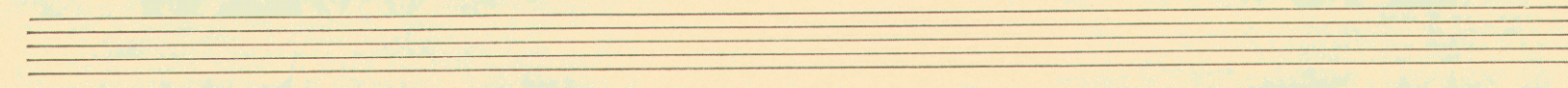
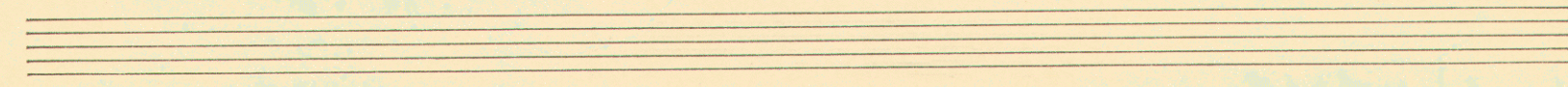
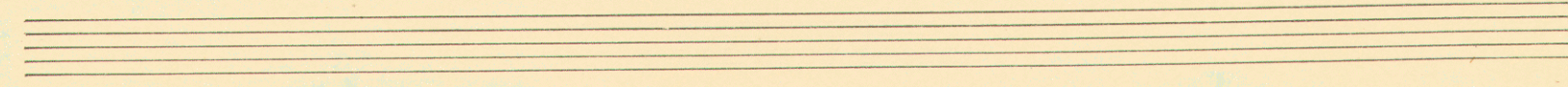
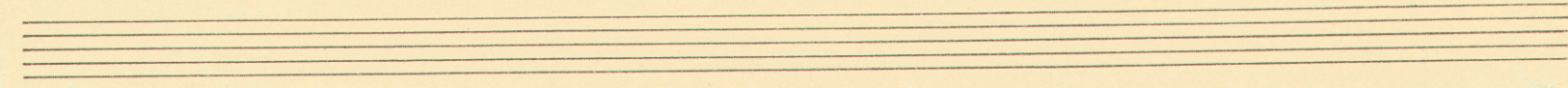
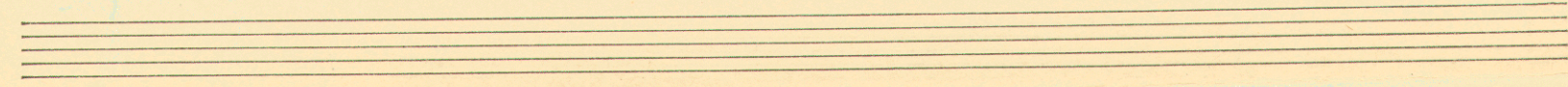
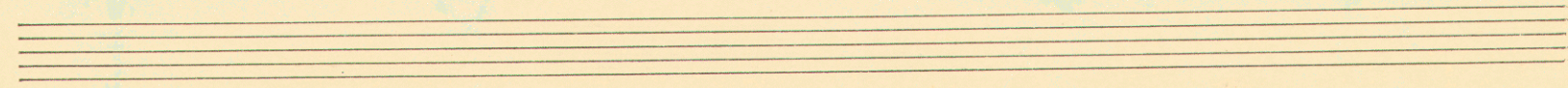
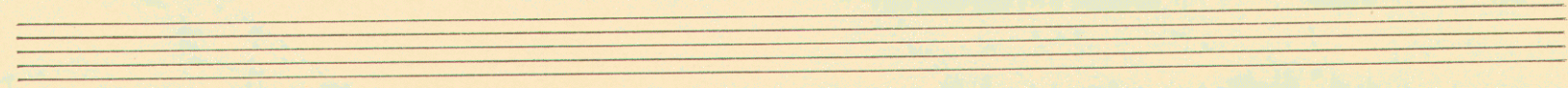
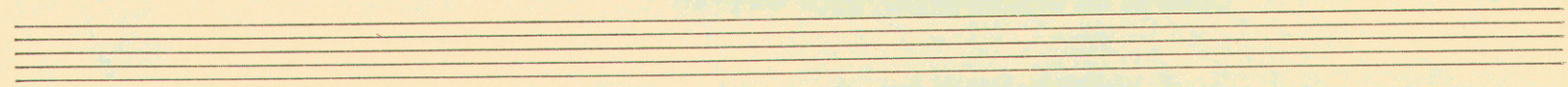
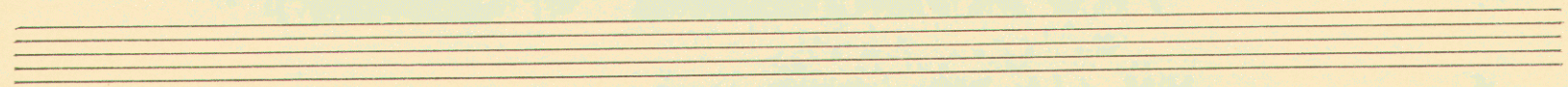
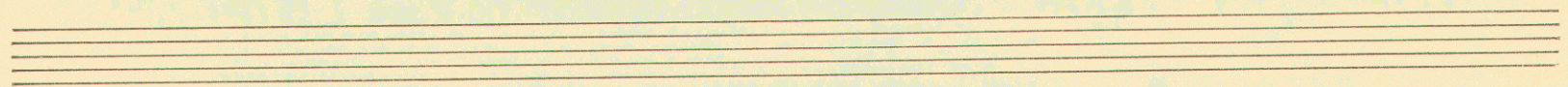
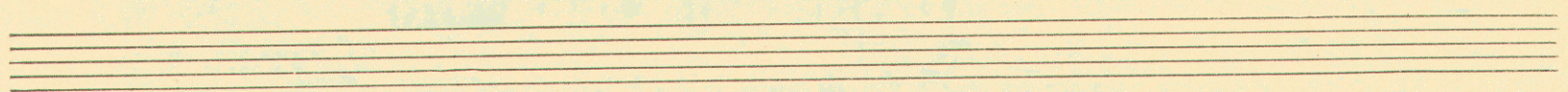


Gründ U lichte

B:S
T:A
H:T
S:B

2) Fermata





8. X. 41.

Grbach Ric. T. Toni (canzona cromatica)

B.H.N. 2. 1



von Bach Jhn A zusammengezogen
zu einem Ablauf, unter Knote des
Quartschritts diatonisch gehalten für die
Cromatiko.

Rd. F.
Bach
VIII
Crom

Musical notation for the first system, including a treble clef, a key signature of one flat, and a 2/4 time signature. The melody is written on a single staff, and the bass line is written on a grand staff below it. The word 'comes' is written below the bass line.

Herrn-
band
Dkm II
TF Zg Bd II

Grbach Hrt

Bach I vs Bach hält die Hölle d. Einsige bei!

Multiple empty musical staves for the lower part of the manuscript.